

Polyflor News

Welcome to the latest news from Polyflor

Inside

- Impressive Installations
- Dementia friendly flooring
- New website launched

Polyflor launches a brand new addition to the Expona family

expona[®] FLOW

DESIGN LED CONTINUOUS VINYL FLOORING



An exciting collection of 50 heavy commercial sheet vinyl flooring designs

A unique addition to the Expona Family



Product samples can be ordered via the Polyflor website or Samples Direct hotline

EXPONA[®] FLOW

Polyflor is pleased to announce the launch of Expona Flow, an exciting collection of 50 heavy commercial sheet vinyl flooring designs launched under the renowned Expona brand, recognised internationally for offering the highest quality, design led luxury flooring.

A unique addition to the Expona family, Expona Flow is available in a 2 metre wide sheet format with a 2mm gauge, 0.7mm wear layer and 50 design options to choose from.

Authentically replicating natural wood planks from a diverse range of tree species and wood treatments, this unique collection also features a herringbone design, industrial concrete effects, linear "Infinity" endless wood designs and "Cosmos" floorcoverings in neutral and bright tones.

Expona Flow is suitable for use in a range of heavy commercial environments including healthcare, education, retail, leisure and offices. This collection is manufactured at our Teesside plant and enhanced with Polyflor PUR polyurethane reinforcement to provide superior cleaning benefits.

'After significant investment in the development of unique and innovative designs, the Expona Flow collection is a fresh and forward thinking range in the growing commercial heterogeneous sheet vinyl flooring market' comments Tom Rollo, Polyflor Marketing Manager.

Expona Flow is also 100% recyclable via the Recofloor vinyl take back scheme.



Polysafe Verona makes a splash at Olympic venue



Polyflor's Verona safety flooring is making waves at Cardiff's International Pool, Wales' highly acclaimed swimming venue. As part of a recent interior refurbishment to the £23m complex, 240m² of Polysafe Verona PUR sheet vinyl has been installed into customer and staff areas.

Specified and installed by Leeway Carpets & Flooring in Pontypridd, a combination of Polysafe Verona colours Horizon Blue 5208 and Nightfall 5207 were laid in the walkway behind the spectator seating area that surrounds the venue's 50m Olympic Pool as well as in an adjacent lighting room and judges' meeting room.

Polysafe Verona brightens up school dining experience



Polysafe Verona PUR sheet vinyl was installed into serving and dining areas of the refectory at Middleton Technology School in Manchester recently, adding a bright and uplifting feel to the dining hall.

Specified by main contractor H Bell & Sons (Rochdale) Ltd and installed by Winton Flooring in Manchester, the fresh hue of Summer Coulis 5217 has been used throughout front and back of house to provide a safe yet attractive floor finish that creates a welcoming and relaxing environment for pupils during lunch breaks.



Expona flooring range brings extra flavour to coffee shop



Luxury vinyl tiles from Polyflor's high design and high performance Expona flooring range were used to create a sophisticated statement floor design at Harris + Hoole coffee shop in Slough recently.

A combination of Expona tiles in contrasting colours were chosen by interior and retail branding design consultancy Path Design of London to create a striking effect.

Flooring contractors Redlay Flooring installed 185m² of Expona Design flooring in the drinking and dining areas of the high

street artisan coffee shop fitted out by Uplands Retail. The design incorporated a mixture of contemporary colours and textures using tiles in Light Elm 6182 wood effect and textile effect Creme Matrix 8077 and Mocca Matrix 8076.

Another 25m² of flooring was installed behind the serving counter and back of house, using Expona Control in Light Elm 6506 to give sustainable slip resistance. Expona flooring has also been specified by consultancy Path Design in other Harris + Hoole coffee shops including Chichester, Southend, Colchester, Broadstairs and Basildon.





Wood fx helps make Winchcombe Place feel like home

Polysafe Wood fx PUR flooring was installed in the reception area, dining room and hair salon of the award-winning Winchcombe Place care home in Newbury, Berkshire recently. The European Oak 3347 shade was chosen to create a welcoming, inspirational and comfortable atmosphere.

Offering residential, dementia and nursing care, this 80 bedroom care home was designed by The Drawing Room Interiors, with specialist furniture supplied and fitted by YTM Furniture. This collaboration was awarded with a prestigious SBID International Design Award for New Build and Development.

Diana Cellela, Director of The Drawing Room Interiors commented, "We wanted to create inspirational and stimulating surroundings for all residents to enjoy that were also supportive to their care. Polysafe Wood fx was a perfect flooring choice because of its high safety specification and its realistic replication of wood tones which can help dementia residents feel at ease."

Polyflor joins SBID

In order to connect even more with the design community, Polyflor has recently become a Professional Industry Partner of the Society of British and International Design.

The Society of British and International Design (SBID) is the leading accreditation organisation for the interior design industry

in Britain. They set the standards for practice in education, competence and conduct, promoting the industry in Britain and around the world.

Find out more at: www.sbid.org



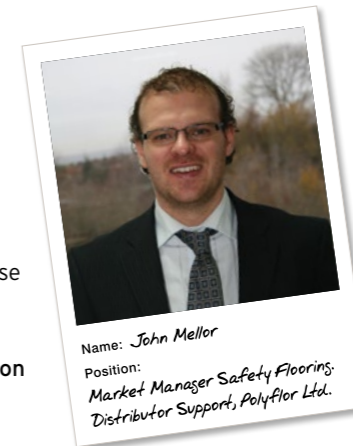
Dementia Friendly Flooring

In a dementia-led facility, flooring can work hand in hand with other interior elements to provide a comfortable environment for residents living with the condition.

A floor that is dementia friendly can contribute to the reduction of anxiety and stress of someone living with dementia who may be experiencing changes to their sense of sight and struggling to find their way around.

The following aspects of flooring design and specification can help those with dementia feel more at ease:

- Use a matt flooring as shiny or glossy surfaces can cause glare and give the illusion of wetness.
- Use a product without sparkle as this can also make the floor look wet.
- Choose a floor without highly contrasting secondary flecks and speckles, someone living with dementia could see these as something to pick up off the ground. Tonal flecks or solid colour designs are preferable.
- The use of effects that replicate natural outdoor materials such as wood and stone promotes a homely, fresh feel which is less clinical than a traditional hospital environment.
- Many patterns and textures on the floor should be avoided as this can lead to confusion.
- Use flooring with similar tones in adjacent areas as a strong contrast in colour can be perceived as a step. However, a strong contrast between the colour of walls and floors, as well as floors and furniture can help those who are visually impaired.
- Strong colours with more depth are better than paler shades for those whose colour vision has deteriorated. However, dark colours should be avoided as these could trigger emotions of imprisonment or might be viewed as a hole in the floor by residents.
- Acoustic flooring is recommended to absorb noise and reduce impact sound levels between rooms as noise can cause agitation for patients.



To read John's full article on dementia friendly flooring visit the Healthcare section of the Polyflor website.



Dementia Action Alliance

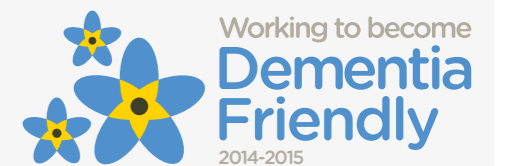
Polyflor has become a local and national member of the Dementia Action Alliance who are committed to transforming the lives of the 800,000 people living with dementia in the UK.

This means that Polyflor has an action plan of commitment to improve outcomes for people with dementia in terms of support activity to the community and can feature the "Working to become Dementia Friendly" logo on appropriate literature.

A dementia friendly community is a city, town or village where people with dementia are understood, respected, supported and confident they can contribute to community life.

Polyflor is also a partner of the International Dementia Design Network, hosted by the University of Salford. Polyflor has an objective to continually offer products that can contribute to a positive interior environment and make the experience of the person living with dementia more comfortable, adding to their quality of life whether at home or in care.

Find out more about the DAA at www.dementiaaction.org.uk



EXPONA®

flooring adds the finishing touches to hair salon

Crowning Glorie hair salon

Polyflor's Expona Design range of luxury vinyl flooring tiles was used to create a bold black and white herringbone design, revitalising Crowning Glorie hair salon in Bristol recently.

Installed by local flooring contractor Bristol Flooring, the fitters used 46m² of Expona Design PUR luxury vinyl tiles to create this on trend statement floor. The contemporary chevron effect was created



by using Expona Design flooring in the contrasting colours of Black Elm 6183 and White Oak 6185 to match the salon's signature monochrome style.



It's official - 2014 was a record-breaking year for Recofloor, the UK's award-winning national vinyl flooring recycling scheme, which collected a whopping 500 tonnes.

Beating the 2013 waste vinyl flooring collection figure by more than 80 tonnes is proof that the scheme continues to benefit from ongoing industry support. Recofloor has now recycled a total of 2,176 tonnes up to December 2014.

"What a fantastic achievement thanks to the consistent efforts of our collectors, contractors and distributors who have made this record 500 tonnes possible. A big thank you to everyone!" comments Recofloor's Carla Eslava.

Coinciding with its 5th anniversary year, the 'milestone 500 tonnes' will also be celebrated at the Recofloor Annual Awards event at Leicester Tigers Rugby Club on Tuesday March 17th 2015.



Record-breaking Recofloor collects 500 tonnes in 2014

Stylish floor design captivates school pupils



An eye-catching flooring design made using Polyflor's 2000 PUR homogeneous vinyl collection is creating an attractive focal point for pupils at Audley Junior School in Blackburn, Lancashire.

A series of circular designs featuring Glacier Blue 8450, Sapphire 8550 and Oak 8300 were installed by AFB Flooring Solutions into the school's main sports and assembly hall. This project required extra diligence as the vinyl had to be intricately cut on-site to create the inlaid designs.

Fran Bury, Director at AFB Flooring Solutions Ltd, commented: "We would particularly like to thank Polyflor's Design Service for their invaluable help in allowing us to turn this design concept into reality."



Polyflor achieves a BES 6001 'Very Good' Rating for Responsible Sourcing

Polyflor is pleased to announce that it has obtained BES 6001 certification, demonstrating compliance with a recognised responsible sourcing scheme as certified by the BRE.

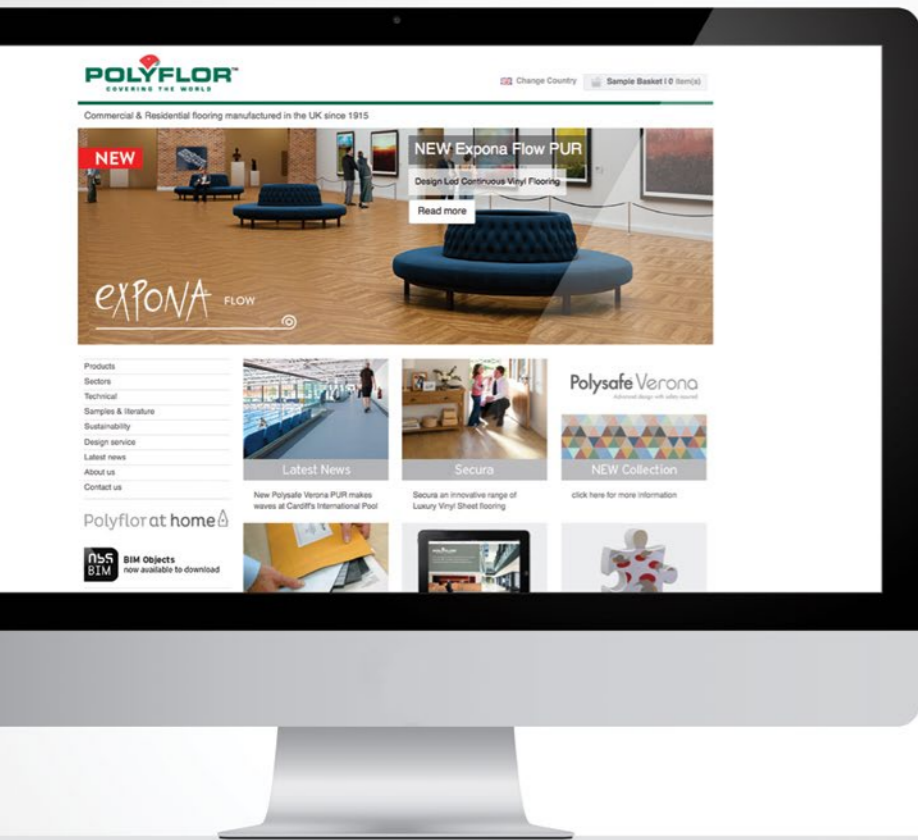
customers looking to procure flooring with sound environmental credentials and traceability, from socially aware and ethical suppliers."

Polyflor is the first flooring manufacturer to be awarded BES 6001, notably achieving a 'Very Good' rating.

Tom Rollo, Marketing Manager, comments: *"BES 6001 is an important standard and it will be extremely valuable to*



NEW Polyflor website goes live. Take a look!



- > The new Polyflor website has now been launched with an improved look and design to give our users a better online experience.
- > Our homepage has a larger graphic panel to showcase our new products.
- > The Search bar is now easier to locate allowing users to search by range and colour.
- > We've added Digital Polyflor and Social Polyflor categories to the site with quick links to Polyflor TV, Facebook and Twitter. Remember that the free Polyflor app for the iPad is available for download from the AppStore and lets you browse our entire product portfolio and order samples.
- > A new Sample Basket function allows users to add items whilst looking through the website which makes the process easier and slicker.
- > A new Related Products link on product pages allows the user to consider alternative or complementary ranges.
- > Larger product scans now feature on product pages and the gallery function allows you to see bigger and better installation photos.
- > The Environment section has been renamed 'Sustainability' and includes links to literature, standards and policies, as well as copies of certificates.



Polyflor South Africa adopts guide dog

Polyflor South Africa recently announced its partnership with Guide Dogs SA by 'adopting' Asia, a black female Labrador Retriever cross puppy.



"The Puppy Raising Scheme involves a puppy walker homing and training a puppy for anything between nine and twelve months prior to their advance training," explains Tandy Coleman-Spolander, Marketing Director of Polyflor South Africa. Raising and training these special dogs is fairly expensive in both time and

capital, Guide Dogs SA therefore relies on companies like Polyflor to help cover the veterinary costs incurred. "We feel very excited and privileged to be part of this journey that is preparing Asia to become somebody's trusted companion and to aid that person to walk and navigate his or her path in life," concludes Tandy.

Frere Academic Hospital



Over the last 5 years, Polyflor South Africa has assisted the Carte Blanche 'Making a Difference' Trust in their efforts to refurbish and equip various paediatric units.

During 2014 Polyflor South Africa donated 720m² of vinyl flooring, mostly Pearlazzo PUR, to help revamp the Frere Hospital Paediatric theatre complex, a government academic hospital, which serves some of South Africa's most deprived communities.

The complex now boasts two new state-of-the-art, dedicated paediatric operating theatres, complete with recovery and nurse stations, management offices and sterilisation rooms.



Polyflor Australia

'Bringing Calyn Home Project'

Polyflor Australia donated flooring, including Expona Design, to a very worthy cause which had received publicity on TV programme 'Sunday Night'. An eight year old boy named Calyn bravely saved his younger brother's life by pushing him out of the way of an oncoming vehicle, but was sadly hit himself and suffered serious injuries.

The 'Bringing Calyn Home Project' was started by hundreds of people volunteering their time, products and services to help this deserving family renovate their home to suit Calyn's needs.



Floor of the Month Competition

Winner receives **£50** Runner-up receives **£25**

We recently launched our Floor of the Month Twitter Competition where we asked our Twitter followers to tweet us with their best installation photos.

We've had lots of entries sent to @PolyflorLtd using the hashtag #polyflorandproud so far.

We will be running the competition each month and the winner and runner-up will receive £50 and £25 worth of high street vouchers as a prize. Here's our first winning entries from S&M Flooring and Rishton Floorcraft.

#polyflorandproud





Polyflor Nordic goes North

Polyflor Nordic has provided the world's northernmost Polyflor vinyl flooring for various projects in Svalbard, a cluster of Norwegian islands situated midway between continental Europe and the North Pole.

Polyflor Nordic is the main supplier of flooring to this remote part of the world where the 2,000 inhabitants are outnumbered by 3,000 polar bears!

It is important for flooring to be hard-wearing here as it is often walked over with heavy duty winter boots which are worn in Svalbard's Arctic climate.

Polyflor Nordic supplied flooring for the following projects in Svalbard:

1. Local hair salon Saxifraga was fitted with Expona Design.

2. 2,500 square metres of Expona Commercial flooring was installed in "Sjøskekrenten studenthybler" halls of residence at the University Centre in Svalbard which offers courses in Arctic studies.

3. SvalSat, Svalbard's state of the art satellite station features a decorative floor which can be seen through the glass staircase.

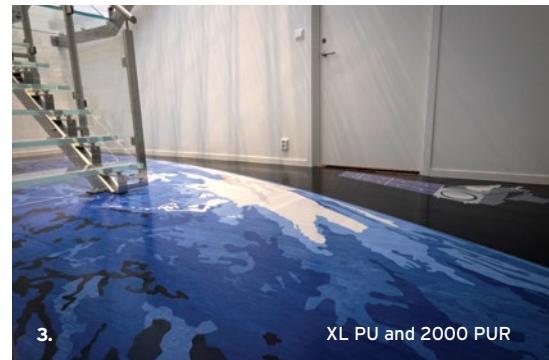
4. MIX Kiosk was fitted with Expona Design.



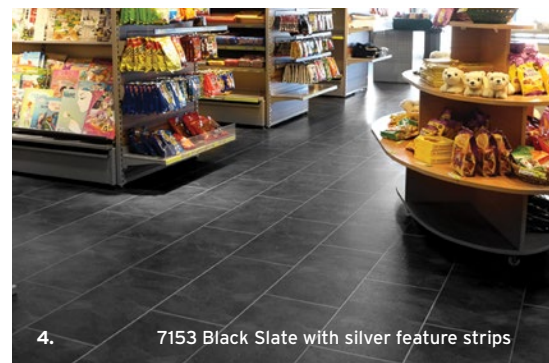
1. 6146 Silvered Driftwood



2. 5042 White Brazilian Slate



3. XL PU and 2000 PUR



4. 7153 Black Slate with silver feature strips